



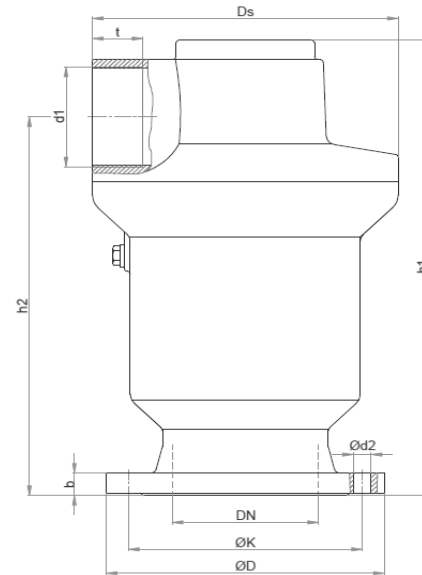
MIRAB INDUSTRIAL VALVES

No.: AST-50-200-10

Single Chamber Air Valve Data Sheet

Rev.: 00 , Date: Jan 2023

Valve Type	Air Valve	Hydrostatic Test	Acc. to DIN EN 12266-1/ API Std. 598/ ISO 5208 Body Test: @ 1.5*PN, Seat Test @ 1.1*PN
Valve Features	Single Chamber Compact Design Double Orifice Triple Function Resilient Seated Very High Discharge Capacity Up to Sonic Velocity Due to Stabilised Floater Min Operation Pressure 0.3 Bar Flow Rate Curves Acc. to Mirab Catalogue	Coating System	Electrostatic Epoxy Powder, RAL 5005 Min DFT 250 micron (Food Grade)
Application	Air Releasing or Injection		
Fluid	Raw water, Drinking water		
End Connection type	Flanged, RF		
Connection Standard	DIN EN 1092-2 (DIN 2501) PN10/ PN16/ PN25		
Valve Size Range	DN 50 ~ DN 200 (NPS 2 ~ NPS 8)		
Body Rating	PN10/ PN16/ PN25		
Temperature Rating	Up to 70 °C		
Design Std.	Mirab Std.		
Body & Cover	Ductile Iron DIN EN 1563 GJS-400-15 (GGG40)		
Float	Polypropylene		
Float Guide	Polypropylene		
Shaft Guide	Stainless Steel ASTM A276 Type 304 (1.4301)		
Body Seat	EPDM Rubber		
Hemispherical Seat	Stainless Steel ASTM A240 Type 304 (1.4301)		



Dimension:



DN mm	PN bar	ØD mm	ØK mm	Ød2 mm	•n	•b mm	h1 mm	h2 mm	Ds mm	d1 mm	t mm	~W (Kg)	~V (dm ³)
50	10.16.25	165	125	19	4	19	280	240	157	R1 ¼"	20	14.5	10
65	10.16.25	185	145	19	PN10,16=4 PN25=8	19	280	240	157	R1 ¼"	20	16.5	10
80	10.16.25	200	160	19	8	19	340	285	188	R2"	25	22	15
100	10.16 25	220 235	180 190	19 23	8	19	384	319	205	R2 ½"	30	28 29.5	20
150	10.16 25	285 300	240 250	23 28	8	19 20	510	423	266	R4"	52	55 56.5	40
200	10.16 25	340 360	295 310	23 28	PN10=8 PN16=12 12	20 22	510	423	266	R4"	52	59 63	40