



MIRAB INDUSTRIAL VALVES

No.: BEF-100-2500-10

Flanged type Butterfly valve Data Sheet

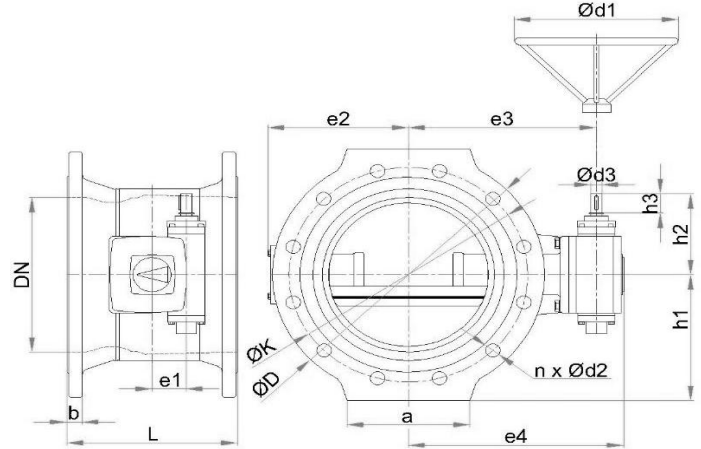
Rev.: 00 , Date: Jan 2023

Valve Type	Butterfly Valve
Valve features	Double Eccentric type Bi-Directional Sealing Tight Shut-Off Closure Renewable Elastomer Sealing Profile (Disc Seat) Extended Size and Rating Range
End Connection type	Flanged, RF
Connection Standard	DIN EN 1092-2 (DIN 2501) PN10
Valve Size Range	DN 100 ~ DN 2500 (NPS 8 ~ NPS 100)
Body Rating	PN10
Temperature Rating	Up to 70 °C
Design Std.	DIN EN 593 (DIN 3354)
Face to Face Std.	DIN EN 558-1 Series 14 (DIN 3202-F4)
Body	Ductile Iron DIN EN 1563 GJS-400-15 (GGG40)
Disc	Ductile Iron DIN EN 1563 GJS-400-15 (GGG40)
Body seat	Weld Overlay AWS 5.9 ER308/ 1.4301
Disc Seat	EPDM Rubber
Shaft	Stainless Steel ASTM A276 Type 420 (1.4021)
Shaft Sealing	O-Ring (NBR)
Bushing	Steel-PTFE/ C95200

Hydrostatic Test Acc. to DIN EN 12266-1/ API Std. 598/ ISO 5208
Body Test: @ 1.5*PN, Seat Test @ 1.1 * PN

Coating System Eletrostatic Epoxy Powder, RAL 5005
Min DFT 250 micron (Food Grade)

Actuator Gearbox, Worm type
Gearbox, Slider-Crank type
Part-Turn, Open-Close Duty
With 0-90° Indicator
Ductile Iron Epoxy Coated Body
With Open/ Close End Stop
Adjustable Swing Range up to 90°
Flange Acc. to EN ISO 5211
Closed Clockwise rotation



Dimension:

DN	L	ØD	b	ØK	Ød2	n	a	e1	e2	e3	e4	h1	h2	h3	Ød1	Ød3	Turns for 90	Approx WT. kg
100	190	220	19	180	19	8	100	50	110	170	219	110	132	31.5	250	16	12.75	21
125	200	250	19	210	19	8	125	50	125	183	232	128	132	31.5	250	16	12.75	29
150	210	285	19	240	23	8	150	50	150	215	253	142	132	31.5	250	16	12.75	34
200	230	340	20	295	23	8	160	50	178	234	274	168	132	31.5	250	16	12.75	52
250	250	395	22	350	23	12	180	50	213	270	310	205	132	31.5	250	16	12.75	70
300	270	445	24.5	400	23	12	200	50	254	319	359	232	132	31.5	250	16	12.75	92
350	290	505	24.5	460	23	16	224	50	280	348	383	263	132	31.5	250	16	12.75	117
400	310	565	24.5	515	28	16	250	63	303	375	424	288	165	42	400	20	12.75	137
450	330	615	25.5	565	28	20	275	80	337	417	467	313	170	42	400	20	13.25	183
500	350	670	26.5	620	28	20	291	80	362	452	502	345	170	42	500	20	13.25	230
600	390	780	30	725	31	20	330	100	417	516	583	398	299	60	500	30	13	335
700	430	895	32.5	840	31	24	400	125	475	555	625	458	304	42	500	20	52	497
800	470	1015	35	950	34	24	450	125	543	615	685	513	304	42	400	20	52	678
900	510	1115	37.5	1050	34	28	550	160	619	682	763	568	380	43	400	20	110.5	1080
1000	550	1230	40	1160	37	28	600	160	700	752	832	633	380	43	500	20	110.5	1240
1100	590	1340	42.5	1270	37	32	650	200	810	875	971	688	510	43	500	20	108.5	1870
1200	630	1455	45	1380	41	32	700	200	860	910	1006	750	485	43	400	20	108.5	1975
1400	710	1675	46	1590	44	36	800	250	976	1080	1200	850	540	60	400	30	103	3530
1600	790	1915	49	1820	50	40	900	315	1076	1180	1340	965	725	60	400	30	212	4455
1800	870	2115	52	2020	50	44	1000	315	1187	1300	1540	1068	725	43	400	20	424	6015
2000	950	2325	55	2230	50	48	1100	400	1315	1465	1705	1175	825	63	500	30	432	8470

