



Valve Type Pressure Reducing Valve

Valve Features Sensitive and Accurate Pressure Control
Straight Pattern Globe Body
Soft Sealing (Resilient seated)
Uni-Directional Sealing
K and Kv Parameter & Recommended Inlet/ Outlet Pressure & Min, Normal and Max.
Flow Rate Acc. to Mirab Catalogue.
Full Port Body (Up to DN200)
Reduced Port Body (DN250 to DN1000)

Application Reduces a higher inlet pressure to a steady lower downstream pressure, regardless of changing flow rate and/or varying inlet pressure.

Fluid Raw water, Drinking water

End Connection type Flanged, RF

Connection Standard DIN EN 1092-2 (DIN 2501) PN10/PN16

Valve Size Range DN 50 ~ DN 1000 (NPS 2 ~ NPS 40)

Body Rating Up to 16 Bar

Temperature Rating Up to 70 °C

Design Std. Mirab Std.

Face to Face Std. DIN EN 558-1 Series 1 (DIN 3202-F1)

Body & Bonnet Ductile Iron DIN EN 1563 GJS-400-15 (GGG40)

Disc Ductile Iron DIN EN 1563 GJS-400-15 (GGG40)

Body seat Stainless Steel ASTM A351 CF8 (1.4308)

Disc Seat EPDM Rubber

Axle Stainless Steel ASTM A276 Type 304 (1.4301)

Axle Sealing O-Ring (NBR)

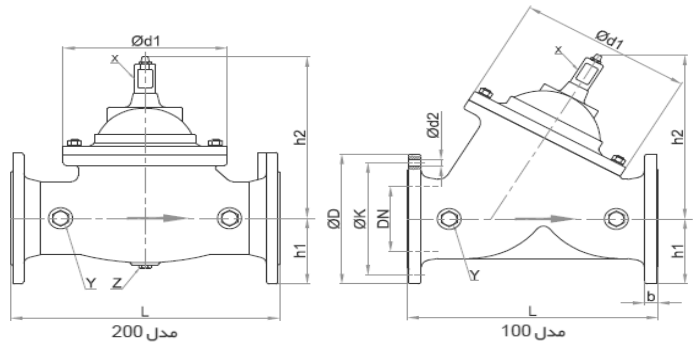
Diaphragm Nylon Reinforced NBR Rubber

Spring Stainless Steel ASTM A276 Type 304 (1.4310)

Hydrostatic Test Acc. to DIN EN 12266-1/ API Std. 598/ ISO 5208
Body Test: @ 1.5*PN, Seat Test @ 1.1*PN
Functional test

Coating System Electrostatic Epoxy Powder, RAL 5005
Min DFT 250 micron (Food Grade)

Actuator Pilot Operated (Fluid actuated)
Accessories:
Tubing and Stariner (Stainless Steel 304)
Pilot (Copper Alloy)
Pressure Gauge
Ball Valves



Dimension:

DN mm	PN bar	L mm	ØD mm	ØK mm	Ød2 mm	n	b mm	h1 mm	h2 mm	Ød1 mm	مدخل	X in	Y in	Z in	Weight Kg
50	10,16	230	165	125	19	4	19	83	140	143	200	G 3/8"	G 3/8"	G 1/4"	17
65	10,16	290	185	145	19	4	19	93	185	200	200	G 3/8"	G 3/8"	G 3/8"	27
80	10,16	310	200	160	19	8	19	100	185	200	200	G 3/8"	G 1/2"	G 3/8"	31
100	10,16	350	220	180	19	8	19	110	230	245	100,200	G 1/2"	G 1/2"	G 3/8"	41
125	10,16	400	250	210	19	8	19	125	240	245	100	G 1/2"	G 1/2"	G 3/8"	50
150	10,16	480	285	240	23	8	19	143	324	335	100	G 1/2"	G 1/2"	G 3/8"	80
200	10	600	340	295	23	8	20	178	370	430	100,200	G 1/2"	G 3/8"	—	135
250	10	730	395	350	23	12	22	200	390	430	100,200	G 1/2"	G 3/8"	G 3/8"	165
300	10	850	445	400	23	12	24.5	208	488	560	100,200	G 1"	G 1/2"	G 1/2"	300
350	10	980	505	460	23	16	24.5	253	650	712	200	G 1 1/4"	G 1/2"	—	583
400	10	1100	565	515	28	16	24.5	283	650	712	200	G 1 1/4"	G 1/2"	—	620
450	10	1200	615	565	28	20	25.5	312.5	715	712	200	G 1 1/4"	G 1/2"	—	765
500	10	1250	670	620	28	20	26.5	345	781	900	200	G 1"	G 1/2"	—	950
600	10	1450	780	725	31	20	30	400	781	900	200	G 3/4"	G 1/2"	—	1300
700	10	1650	895	840	31	24	32.5	458	1068	1226	200	G 3/4"	G 1/2"	—	2550
800	10	1850	1015	950	34	24	35	593	1068	1226	200	G 3/4"	G 1/2"	—	2800
1000	10	2250	1230	1160	37	28	40	620	1453	1530	200	G 3/4"	G 1"	—	4700

