



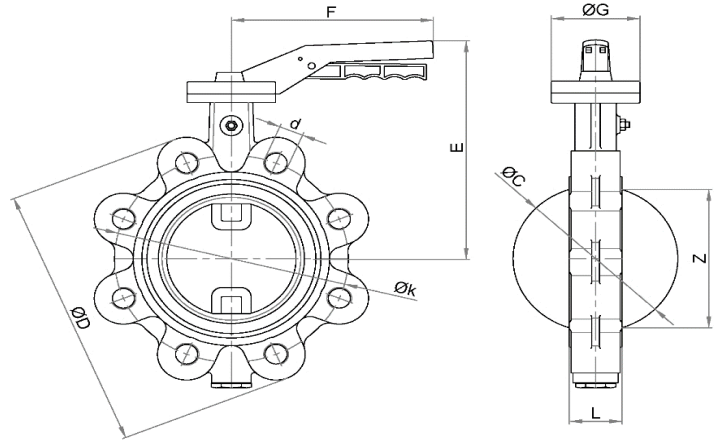
MIRAB INDUSTRIAL VALVES

No.: BCL-20-300-CL150

Lug type Butterfly valve Data Sheet

Rev.: 00 , Date: Jan 2023

Valve Type	Butterfly Valve Lug Type	Hydrostatic Test	Acc. to DIN EN 12266-1/ API Std. 598/ ISO 5208 Body Test: N/A, Seat test @ 1.1*PN
Valve Features	Concentric type Bi-Directional Sealing Tight Shut-Off Closure K & KV Parameters Acc. to Mirab catalogue Gasket for installation is not required due to Renewable U-Shape Elastomer liner on valve body	Coating System	Electrostatic Epoxy Powder, RAL 5005 Min DFT 150 micron (Food Grade)
Application	On-Off (Isolating)	Actuator	Lever With 0-90° Indicator Material : up to DN200: Aluminium Epoxy Coated DN250 & DN300: Ductile Iron Epoxy Coated Closed Clockwise Rotation
Fluid	Raw water, Drinking water, Non-Corrosive Liquid and Gas		
End Connection type	Lug type		
Connection Standard	ASME/ ANSI B16.5 CLASS 150		
Valve Size Range	DN 20 ~ DN 300 (NPS 3/4 ~ NPS 12)		
Body Rating	Up to 16 Bar		
Temperature Rating	DN20 to DN200: Up to 110 °C DN250 to DN300: Up to 70 °C		
Design Std.	DIN EN 593 & API Std. 609 Cat. A		
Face to Face Std.	DIN EN 558-1 Series 20 & API Std. 609 Cat. A		
Body	Ductile Iron DIN EN 1563 GJS-400-15 (GGG40)		
Disc	Up to DN200: Stainless Steel ASTM A351 Gr.CF8 (1.4308) DN250 to DN300: Ductile Iron DIN EN 1563 GJS-400-15 (GGG40)		
Body seat (Liner)	EPDM Rubber		
Shaft	Stainless Steel ASTM A276 Type 420 (1.4021)		
Shaft Sealing	O-Ring (NBR)		
Bushing	Steel-PTFE/ C95200		
End Cap	Aluminium		



Dimension:



DN	ØD	ØC	Z	E	F	ØG	Class 150		
							ø k mm	d in	n
20	105	-	-	170	196	65	69.9	UNC 1/2"	4
25	115	-	-	170	196	65	79.4	UNC 1/2"	4
32	140	-	-	170	196	65	88.9	UNC 1/2"	4
40	150	-	-	179	196	65	98.4	UNC 1/2"	4
50	165	50	19.6	192	196	65	120.7	UNC 5/8"	4
65	185	65.7	43.2	202	196	65	139.7	UNC 5/8"	4
80	200	79.5	61.8	228	230	90	152.4	UNC 5/8"	4
100	225	99.6	82.3	236	230	90	190.5	UNC 5/8"	8
125	250	124	108.5	250	230	90	215.9	UNC 3/4"	8
150	285	151.4	139	287	267	90	241.3	UNC 3/4"	8
200	340	199	188.4	311	267	90	298.5	UNC 3/4"	8
250	400	251	240.1	386	445	125	362	UNC 7/8"	12
300	455	299	286.9	413	445	125	431.8	UNC 7/8"	12