



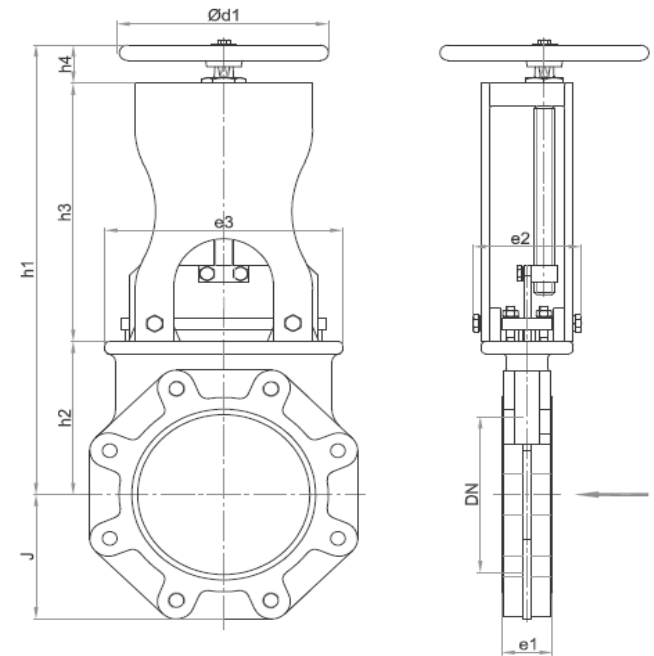
MIRAB INDUSTRIAL VALVES

No.: GKL-50-600-10

Knife Gate Valve Data Sheet

Rev.: 00 , Date: Jan 2023

Valve Type	Gate Valve, Knife type	Hydrostatic Test	Acc. to DIN EN 12266-1/ API Std. 598/ ISO 5208 Body Test: @ 1.5*PN, Seat Test @ 1.1*PN
Valve Features	Uni-Directional Sealing Tight Shut-Off Closure Inside Screw Non-Rising Stem	Coating System	Electrostatic Epoxy Powder, RAL 5005 Min DFT 250 micron (Food Grade)
End Connection type	Wafer-Lug	Actuator	Handwheel Material St37-2 or Ductile Iron, Epoxy Coated Closed Clockwise Rotation
Connection Standard	DIN EN 1092-2 (DIN 2501) PN10		
Valve Size Range	DN 50 ~ DN 600 (NPS 2 ~ NPS 24)		
Body Rating	PN10		
Working Pressure	Acc. to Mirab catalogue		
Temperature Rating	Up to 70 °C		
Design Std.	Manufacturer Std.		
Face to Face Std.	DIN EN 558-1 Series 20 (DIN 3202-K1)		
Body & Bonnet	Ductile Iron DIN EN 1563 GJS-400-15 (GGG40)		
Wedge	Stainless Steel ASTM A240 Type 304 (1.4301)		
Body seat	EPDM Rubber		
Stem	Stainless Steel ASTM A276 Type 420 (1.4021)		
Shaft Sealing	PTFE Packing		



Dimension:



DN	e1	e2	e3	h1	h2	h3	h4	Ød1	J	Weight Kg
50	43	90	110	307	105	135	67	180	64	7.5
65	46	90	120	331	115	149	67	180	71	8.5
80	46	92	140	386	124	192	70	180	100	10.5
100	52	100	170	422	145	192	64	240	110	12
125	56	100	185	455	157	233	64	240	117	15
150	56	102	213	486	180	242	64	240	134	17
200	60	127	284	586	197	308	82	320	160	35
250	68	144	330	723	265	365	93	320	197.5	44
300	78	144	380	792	290	408	94	320	222.5	58
350	78	144	438	902	344	459	99	319	248	96
400	102	159	489	1019	385	519	115	500	282.5	108
450	114	194	546	1097	432	603	62	500	313	168
500	127	194	610	1244	480	643.5	120.3	500	335	192
600	154	233.5	714	1473	590	763	120	500	387.5	245