



MIRAB INDUSTRIAL VALVES

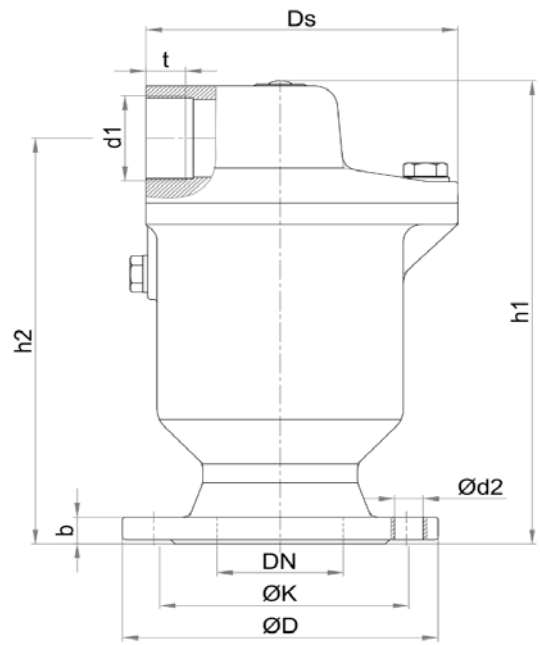
No.: AST-50-200-10

Single Chamber Air Valve Data Sheet

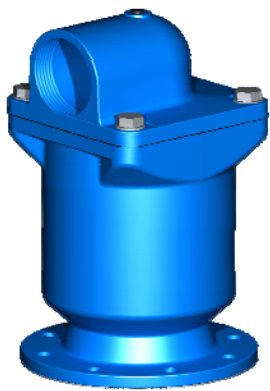
Rev.: 01 , Date: Dec 2024

Valve Type	Air Valve
Valve Features	Single Chamber Compact Design Double Orifice Triple Function Resilient Seated Very High Discharge Capacity Up to Sonic Velocity Due to Stabilised Floater Min Operation Pressure 0.3 Bar Flow Rate Curves Acc. to Mirab Catalogue
Application	Air Releasing or Injection
Fluid	Raw water, Drinking water
End Connection type	Flanged, RF
Connection Standard	DIN EN 1092-2 (DIN 2501) PN10/ PN16/ PN25
Valve Size Range	DN 50 ~ DN 200 (NPS 2 ~ NPS 8)
Body Rating	PN10/ PN16/ PN25
Temperature Rating	Up to 70 °C
Design Std.	Mirab Std.
Body & Cover	Ductile Iron DIN EN 1563 GJS-400-15 (GGG40)
Float	Polypropylene
Float Guide	Polypropylene
Body Seat	EPDM Rubber
Hemispherical Seat	Polyamide

Hydrostatic Test	Acc. to DIN EN 12266-1/ API Std. 598/ ISO 5208 Body Test: @ 1.5*PN, Seat Test @ 1.1*PN
Coating System	Electrostatic Epoxy Powder, RAL 5005 Min DFT 250 micron (Food Grade)



Dimension:



DN mm	PN bar	ØD mm	ØK mm	Ød2 mm	n	b mm	h1 mm	h2 mm	Ds mm	d1 mm	t mm	~W (Kg)	~V (dm ³)
50	10.16.25	165	125	19	4	19	280	240	157	R1 ¼"	20	14.5	10
65	10.16.25	185	145	19	PN10,16=4 PN25=8	19	280	240	157	R1 ¼"	20	16.5	10
80	10.16.25	200	160	19	8	19	340	285	188	R2"	25	22	15
100	10.16	220	180	19	8	19	384	319	205	R2 ½"	30	28	20
	25	235	190	23								29.5	
150	10.16	285	240	23	8	19	510	423	266	R4"	52	55	40
	25	300	250	28								56.5	
200	10.16	340	295	23	PN10=8 PN16=12	20	510	423	266	R4"	52	59	40
	25	360	310	28	12							22	