



MIRAB INDUSTRIAL VALVES

No.: GMF-100-10

Metal Seat Gate Valve Data Sheet

Rev.: 01 , Date: Mar 2025

Valve Type Gate Valve Metal Seat

Hydrostatic Test

Acc. to DIN EN 12266-1/ API Std. 598/ ISO 5208
Body Test: @ 1.5*PN, Seat Test @ 1.1*PN

Valve Features

Bi-Directional Sealing
Tight Shut-Off Closure
Inside Screw
Non-Rising Stem
Bolted Bonnet
Flexible Wedge

Coating System

Electrostatic Epoxy Powder, RAL 7001
Min DFT 150 µm
Food Grade

End Connection type

Flanged, RF

Actuator

Handwheel
Material St37-2 or Ductile Iron, Epoxy Coated
With 0-90° Indicator
Closed Clockwise Rotation

Connection Standard

DIN EN 1092-1 , PN10/PN16/PN25/PN40
ASME/ ANSI B16.5 Class 150

Valve Size Range

DN 50 ~ DN 300 (NPS 2 ~ NPS 12)

Body Rating

up to 40 Bar

Temperature Rating

Up to 110 °C

Design Std.

DIN 3352

Face to Face Std.

DN50 & DN65 : DIN EN 558-1 Series 14 (DIN 3202-F4)
DN80 up to DN300:
PN10,16 : DIN EN 558-1 Series 14 (DIN 3202-F4)
PN25, PN40 & Class 150 : ASME B16.10 Class 150

Body & Bonnet

Cast Steel ASTM A216 Gr. WCB

Wedge

DN50 up to DN100 :
Stainless Steel A351 CF8 (AISI 304)
DN125 up to DN300:
Cast Steel ASTM A216 Gr. WCB

Body seat

Weld Overlay AWS 5.9 ER308/ 1.4301

Wedge Seat

DN50 up to DN100:
Stainless Steel A351 CF8 (AISI 304)
DN125 up to DN300:
Weld Overlay AWS 5.9 ER308/ 1.4301

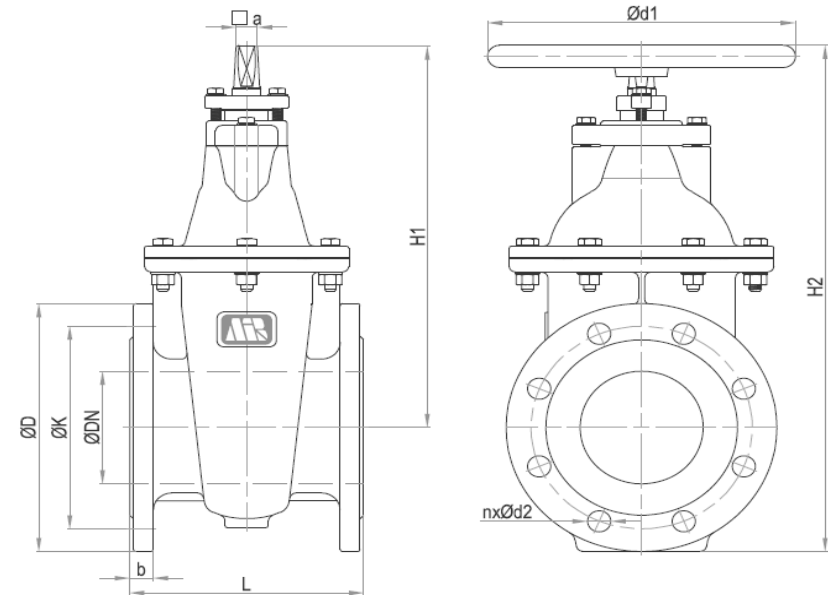
Stem

Stainless Steel ASTM A276 Type 420 (1.4021)

Shaft Sealing

PTFE Packing

Dimension:



DN mm	PN bar	L mm	ØD mm	ØK mm	n	Ød2 mm	b	H 1 mm	H 2 mm	a mm	Ød1 mm		
50	10/16	150 (DIN 3202 F4)	165	125	4	18	18	238	325.5	11	200		
	25/40		150	120.7			20		313				
	Class 150		19.1	19.1			19.1		313				
65	10/16	172 (DIN 3202 F4)	185	145	4	18	18	282	378	14	200		
	25/40		180	139.7			22		372				
	Class 150		19.1	22.3			19.1		372				
80	10/16	180	200	160	8	18	20	309.5	413	14	200		
	25/40	203					24		409.5				
	Class 150	190					152.4		19.1			23.9	405
100	10/16	190	220	180	8	18	20	338.5	451	17	250		
	25/40	228.6					24		456				
	Class 150	230					190.5		19.1			23.9	454
125	10/16	200	250	210	8	18	22	400.5	528.5	17	250		
	25	254					26		535.5				
	40						26		535.5				
150	10/16	210	285	240	8	22	22	442	587.5	17	360		
	25	266.7					28		592				
	40						22.3		25.4			582	
200	10	230	340	295	8	22	24	536.5	711	19	360		
	16								292			26	716.5
	25											30	724
	40											34	724
250	10	250	395	350	12	22	26	674	871.5	27	500		
	16								30			876.5	
	25								32			886.5	
	40								33			899	
	Class 150								25.4			30.2	876.5
300	10	270	445	400	12	22	26	756	978.5	27	500		
	16								28			986	
	25								34			998.5	
	40								42			1013.5	
	Class 150								25.4			31.8	998.5