



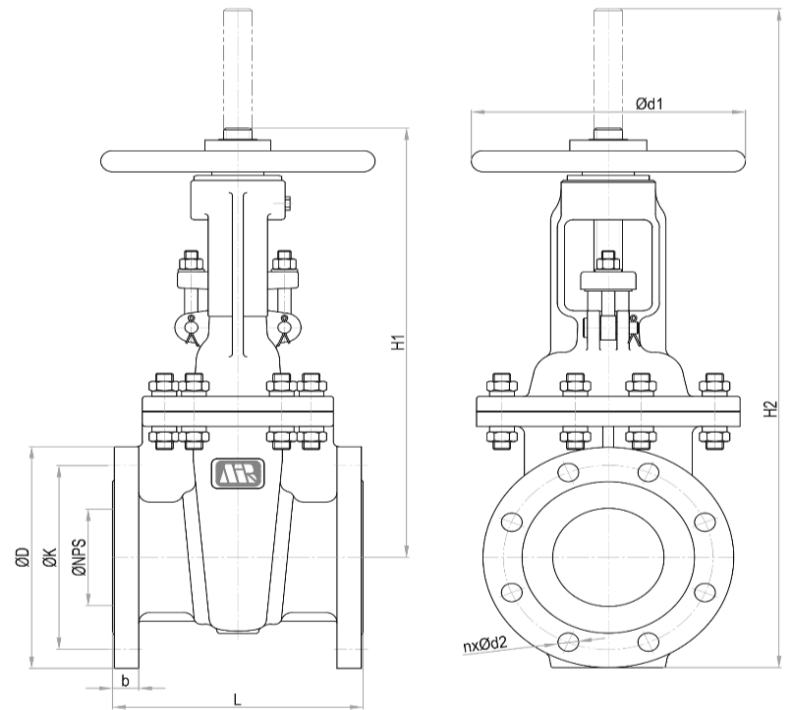
MIRAB INDUSTRIAL VALVES

No.: GOF-80-200-150

OS&Y Metal Seat Gate Valve Data Sheet

Rev.: 01 , Date: Dec 2025

Valve Type	Gate Valve Metal Seat	Hydrostatic Test	Acc. to DIN EN 12266-1/ API Std. 598/ ISO 5208 Body Test: @ 1.5*PN, Seat Test @ 1.1*PN
Valve Features	Bi-Directional Sealing Tight Shut-Off Closure Outside Screw and Yoke Rising Stem Non-Rising Handwheel Bolted Bonnet With Back Seat Bushing Solid Wedge	Coating System	Electrostatic Epoxy Powder, RAL 7001 Min DFT 250 micron (Food Grade)
End Connection type	Flanged, RF	Actuator	Handwheel Material St37-2 or Ductile Iron, Epoxy Coated With 0-90° Indicator Closed Clockwise Rotation
Connection Standard	ASME/ ANSI B16.5 Class 150		
Valve Size Range	DN 80 ~ DN 200 (NPS 3 ~ NPS 8)		
Body Rating	Class 150		
Temperature Rating	Up to 110 °C		
Design Std.	ASME B16.34		
Face to Face Std.	ASME B16.10 Class 150		
Body & Bonnet	Cast Steel ASTM A216 Gr. WCB		
Wedge	Cast Steel ASTM A216 Gr. WCB		
Body seat	Weld Overlay AWS 5.9 ER308L/ 1.4301		
Wedge Seat	Weld Overlay AWS 5.9 ER308L/ 1.4301		
Stem	Stainless Steel ASTM A276 Type 420 (1.4021)		
Shaft Sealing	PTFE/ Graphite Packing		
Back Seat Bushing	Stainless Steel 1.4301		



- ASME B16.5 Class150
- ANSI B16.10 Class150

Class150	ØNPS	L	ØD	ØK	n	Ød2	b	H1	H2	Ød1	~W
	in	mm	mm	mm		mm		mm	mm	mm	(Kg)
	3"	203.2	190	152.4	4	19.1	23.9	389	485	250	28
	4"	228.6	230	190.5	8	19.1	23.9	445	569	250	30
	6"	266.7	280	241.3	8	22.3	25.4	595	758	360	65
8"	292.1	345	298.5	8	22.3	28.6	722	939	360	110	